

# NVIDIA Stereo Setting

3D PluraVIEW



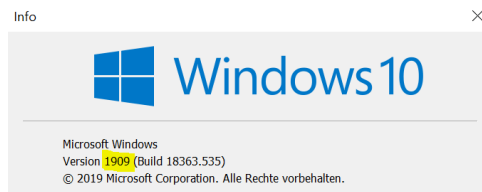
# NVIDIA Stereo driver Settings for 3D PluraVIEW

General: NVIDIA supports 3D QuadBuffer passive Stereo at least since 2003!

In principle, any NVIDIA Quadro driver at all Microsoft Windows Desktop-OS should support our 3D PluraVIEW monitor.

Since Microsoft has decided to offers with **Windows 10 a live time operating system**, the user has to check now recently, if the installed graphics card driver version is validated to the Windows 10 Build number!

You can check the Windows 10 Version if you click the Start button, Type "**winver**" in the search box and press Enter.



This document we will explain, How-To reset first the already installed NVIDIA Quadro driver to the factory defaults and after a restart, How-To enable the passive Stereo settings at NVIDIA Quadro drivers correct.

In case that after you have followed carefully the steps of these instructions, our test tool REDBLUE.exe will show two times a blue rectangle, than finally we recommended to install the latest NVIDIA Quadro driver from our website [www.schneider-digital.com](http://www.schneider-digital.com)

This happens typically if your installed NVIDIA Quadro graphics card driver fits not to your installed Windows 10 version.

If you use a **mobile** Workstation, be sure that your **Hybrid INTEL** graphics device is switched OFF at the **BIOS-Settings** of your Laptop and all stereo displays are driven by the NVIDIA Quadro card.

Now make sure that the following points are prepared before you start.

- 3D PluraVIEW is already powered ON with the main switch at the backside.
- In case you need mini-DisplayPort adapters, please only use the ones already delivered with your 3D PluraVIEW system.
- To setup a mobile Workstation with Thunderbolt-3 or USB-C connector, please use the USB 3.1 Type-C adapter to DisplayPort 1.2 / Schneider Digital part number 14607.
- Workstation is set and running.

### Step 1:

Plug the 3D PluraVIEW system into the Display Ports of your Nvidia Quadro Card as seen in the Picture.

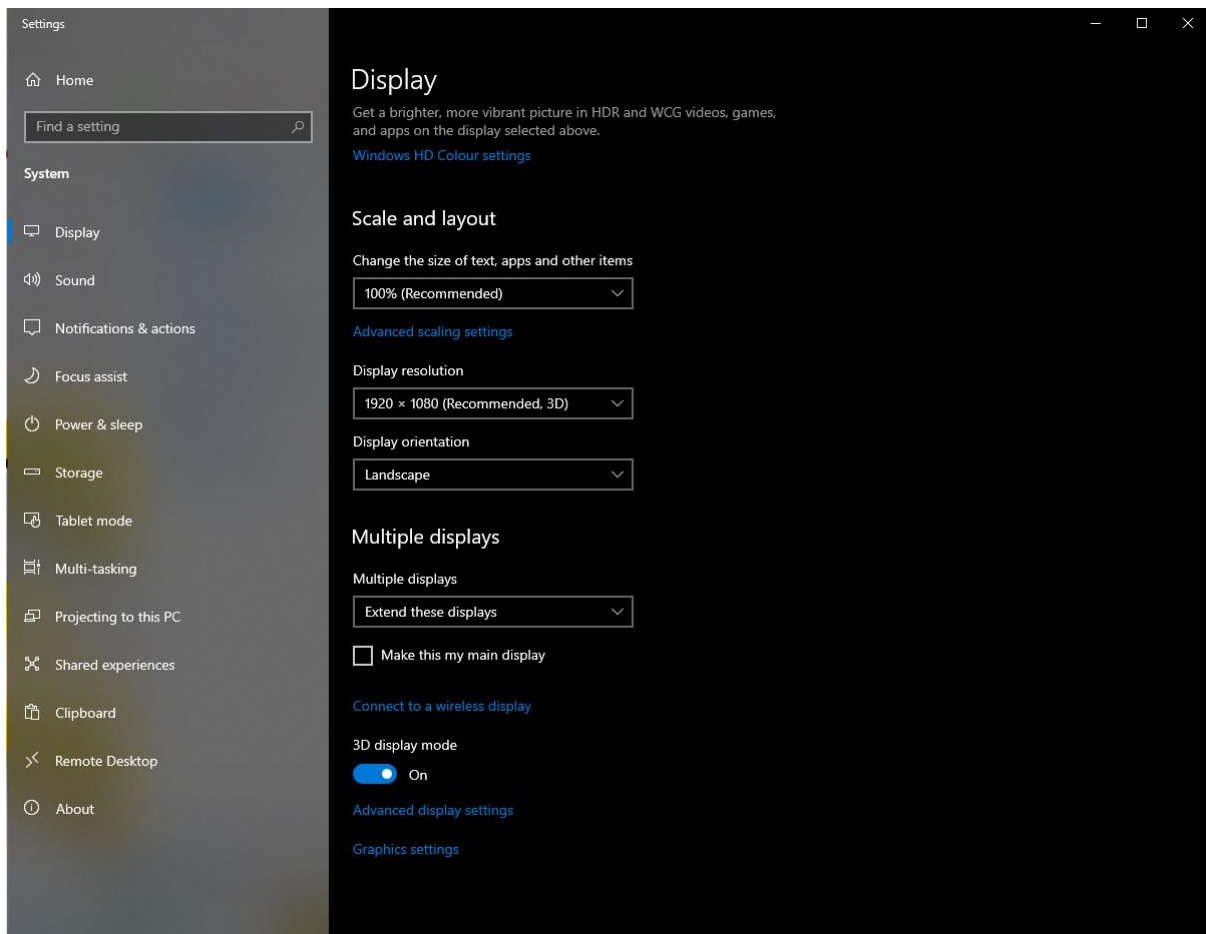
- **Bottom** labeled cable -> **Port 1**
- **Top** labeled cable -> **Port 2**



## Step 2:

Right click on your Desktop and go to **“Display Setting”**.

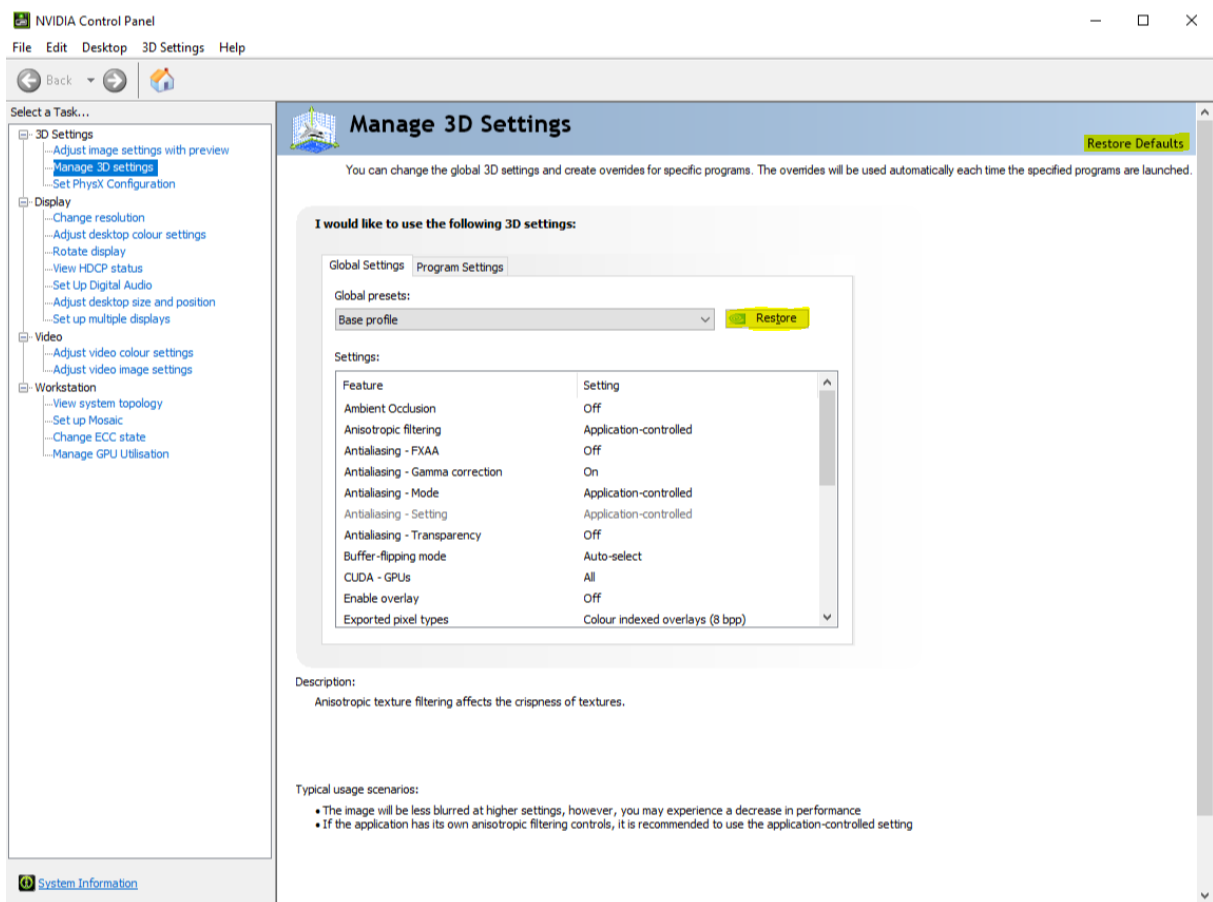
- Check if **both** Displays are shown
- Make sure the **Bottom** Display is the **Main** Display.
- See if both Displays are at the same Resolution:
  - 28” 4k PluraView -> 3840 x 2160 (Recommended 3D)
  - 27” WQHD PluraView -> 2560 x 1440 (Recommended 3D)
  - 24” FullHD PluraView -> 1920 x 1080 (Recommended 3D)
  - 22” Compact FullHD PluraView -> 1920 x 1080 (Recommended 3D)
- Check if the Microsoft **“3D Display mode”** is set to -> **ON**



### Step 3:

Right Click on your Desktop and go to **NVIDIA Control center**.

- Open **“Manage 3D settings.”**
- Hit **Restore Defaults** at the right top corner and click on **Yes** and **Apply**.
- Hit **Restore** on the **Base Profile** and click on **Yes** and **Apply**.
- After this factory default, a **Restart** of your Workstation is essential.



## Step 4:

After the reboot, please open with a right click on your Desktop again the **NVIDIA Control center**. Navigate to **“Change resolution”** check if both Displays have the same settings as following:

- Resolution (As mentioned in Step 2)
- Refresh rate
  - 4k, WQHD, FullHD -> **60Hz**
  - 24” FullHD -> **144Hz**
- Nvidia Colour settings
  - Output colour format: -> **RGB**
  - Output dynamic range: -> Full
  - Output colour depth: -> **8bpc**

Select a Task...

- 3D Settings
  - Adjust image settings with preview
  - Manage 3D settings
  - Set PhysX Configuration
- Display
  - Change resolution**
  - Adjust desktop colour settings
  - Rotate display
  - View HDCP status
  - Set Up Digital Audio
  - Adjust desktop size and position
  - Set up G-SYNC
  - Set up multiple displays
- Video
  - Adjust video colour settings
  - Adjust video image settings
- Workstation
  - View system topology
  - Set up Mosaic
  - Change ECC state
  - Manage GPU Utilisation

### Change Resolution

You can adjust the amount of information appearing on the screen and reduce flickering. You can also choose the high-definition (HD) format if you are using an HD TV.

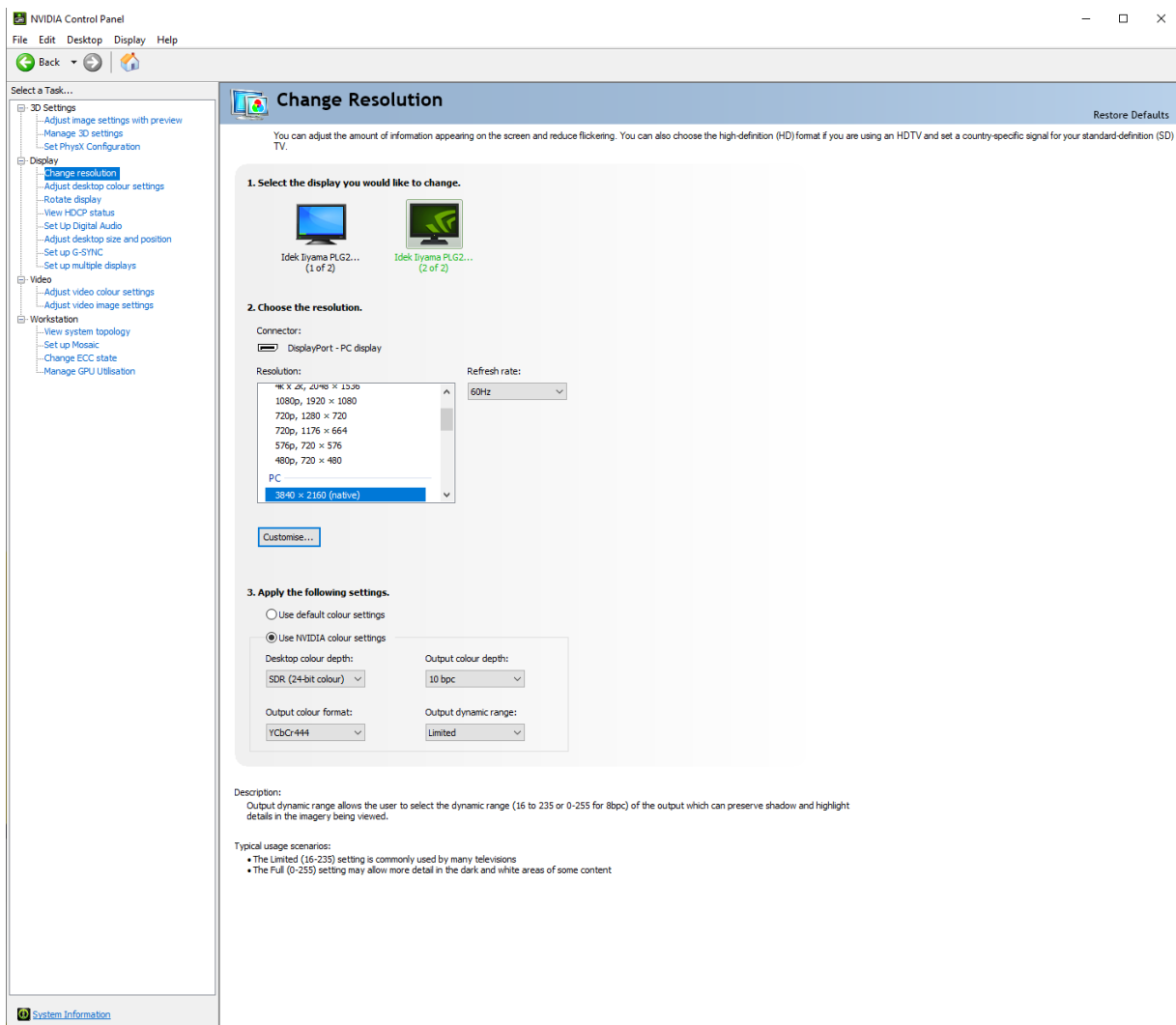
- Select the display you would like to change.**
  - Idek Iiyama PL2730Q (1 of 2)
  - Idek Iiyama PL2730Q (2 of 2)
- Choose the resolution.**
  - Connector: DisplayPort - PC display
  - Resolution: 2560 x 1440 (native)
  - Refresh rate: 60Hz
  - Customise...
- Apply the following settings.**
  - Use default colour settings
  - Use NVIDIA colour settings
    - Desktop colour depth: SDR (24-bit colour)
    - Output colour depth: 8 bpc
    - Output colour format: RGB
    - Output dynamic range: Full

Our 28" 4k PluraView Model can drive with **10Bit** color depth.

Therefore, you need to set different color settings.

- Desktop color depth: -> **10bit**
- Output color depth: -> **10bpc**
- Output color format: -> **YCbCr444**
- Output dynamic range: -> Limited

**Side Note:** If Top and Bottom display are showing different colors, please follow the instruction for **10Bit** above.

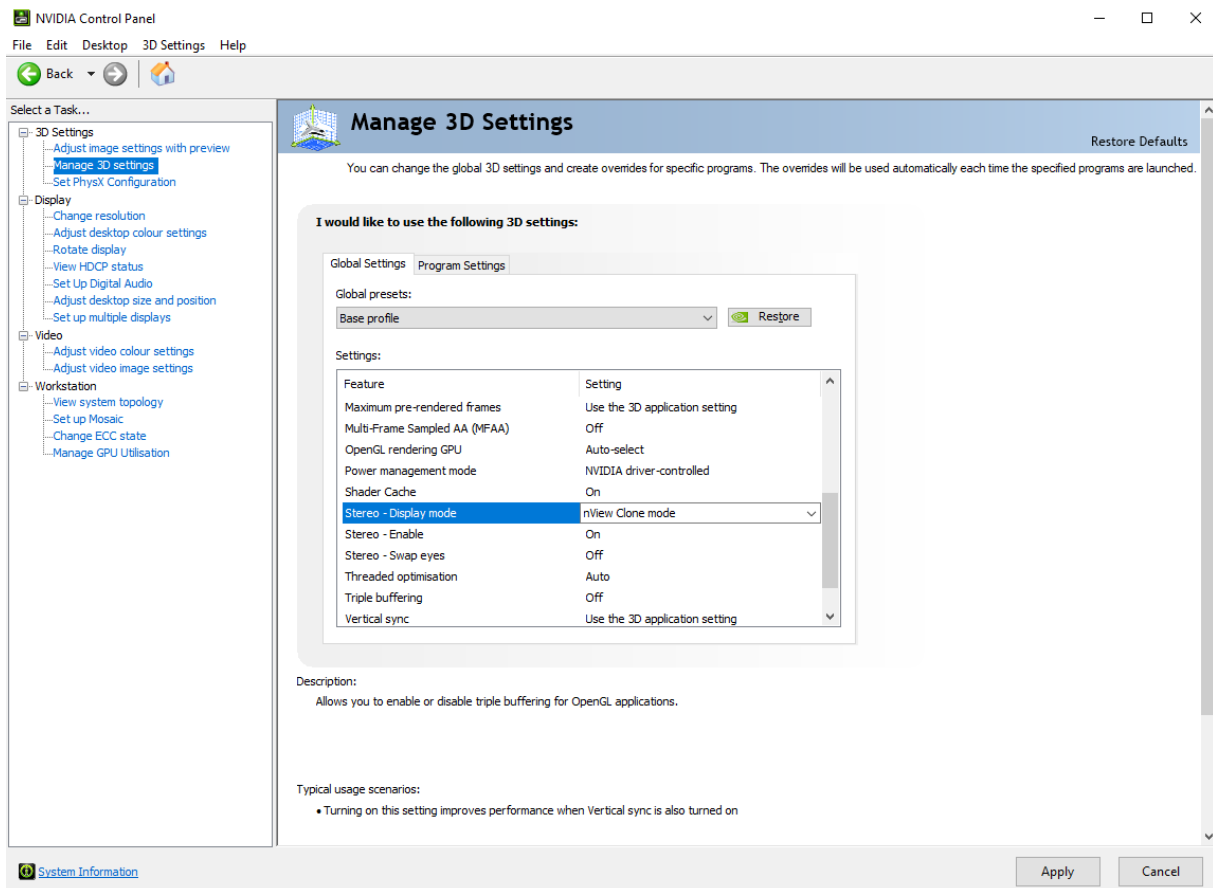
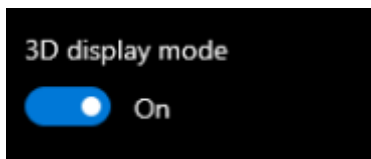


## Step 5:

Inside the Nvidia Control Center go to **Manage 3D Settings**.

- Stereo – Display mode -> **nView Clone mode**
- Stereo – Enable -> **On**
- Stereo – Swap eyes -> Off

Stereo Enable might be unable to switch, depending on your Windows Version.  
Make sure you followed Step 2 and **enabled “3D Display Mode”** under **Windows!**





## Step 6:

### Navigate to “Set up multiple displays.”

- Make sure the **Primary Display** is the **Bottom Display** (Marked with a Star)
  - You can change and Identify the **Primary Display** with a **Right Click** on the Display.
- **Right Click** on your Display with a Star
- Chose **Clone With -> 2**
- Hit **Apply**
- Wait until Nvidia control center asks to **Confirm** your Setting

2. Drag the icons to match your display configuration.

Primary display  
Set up merged display

Description:  
Drag the icons so they match the physical configuration of your displays. Right-click on an icon for additional options.

NVIDIA Control Panel

File Edit Desktop Display Help

Select a Task...

- 3D Settings
  - Adjust image settings with preview
  - Manage 3D settings
  - Set PhysX Configuration
- Display
  - Change resolution
  - Adjust desktop colour settings
  - Rotate display
  - View HDCP status
  - Set Up Digital Audio
  - Adjust desktop size and position
  - Set up G-SYNC
  - Set up multiple displays
- Video
  - Adjust video colour settings
  - Adjust video image settings
- Workstation
  - View system topology
  - Set up Mosaic
  - Change ECC state
  - Manage GPU Utilisation

### Set Up Multiple Displays

NVIDIA nView technology allows you to specify how you would like to use multiple displays.

1. Select the displays you want to use.

Quadro RTX 5000

<input checked="" type="checkbox"/>	Intel i7000 (1 of 2)	2
<input checked="" type="checkbox"/>	Intel i7000 (2 of 2)	1

My display is not shown...

2. Drag the icons to match your display configuration.

Primary display  
Set up merged display

Description:  
Drag the icons so they match the physical configuration of your displays. Right-click on an icon for additional options.

Typical usage scenarios:

- Matching the desktop to the physical configuration of the displays
- Changing the primary display
- Cloning displays

System Information

Apply Cancel

## Step 7:

**RESTART** now your Workstation to save all settings!

To check if the QuadBuffer Stereo and the Display orientation are working correctly, we recommend using a small Tool called REDBLUE.exe

REDBLUE.exe will display a red and blue Box on each Display, witch if everything is correctly setup, will overlap on the Mirror.

- **Red** Box shows on your **Right** eye on the **Top** Display.
- **Blue** Box shows on your **Left** eye on the **Bottom** Display.

This tool can be found on our Website as well as current Drivers.

- [REDBLUE.exe](#)

## **Workstations (driver)**

- 📁 [PULSARON](#) (AMD)
- 📁 [CENTURON](#) (INTEL)

## **Professional Graphics Card**

- 📁 [AMD](#) (Radeon PRO & FirePRO)
- 📁 [NVIDIA](#) (TESLA / QUADRO / NVS)

## **Workstation (Tools / Benchmarks / Diagnostik)**

- 📁 [Benchmarks](#)
- 📁 [CPU-BurnIn](#)
- 📁 [CPU-Diagnostic](#)
- 📁 [Memory RAM](#)
  
- 📁 [HW Temprature Tools](#)
- 📁 [HW Reporting](#)

Feel free to Contact [support@schneider-digital.com](mailto:support@schneider-digital.com) with all Questions

or Call in directly into our Office: +49 (8025) 9930-10